

HBDL INSTALLATION INSTRUCTIONS

WARNING!

IMPORTANT SAFEGUARDS:

Read and Follow all safety instructions before Installation! Save these instructions and deliver to owner after installation.

IMPORTANT: Read all instructions carefully before attempting installation. If you do not understand these instructions, please consult your local distributor. Thoroughly inspect your fixture for any freight damage; freight damage should be reported to the delivery carrier.



PREPARING YOUR FIXTURE

STEP 1: Make sure all active power is off

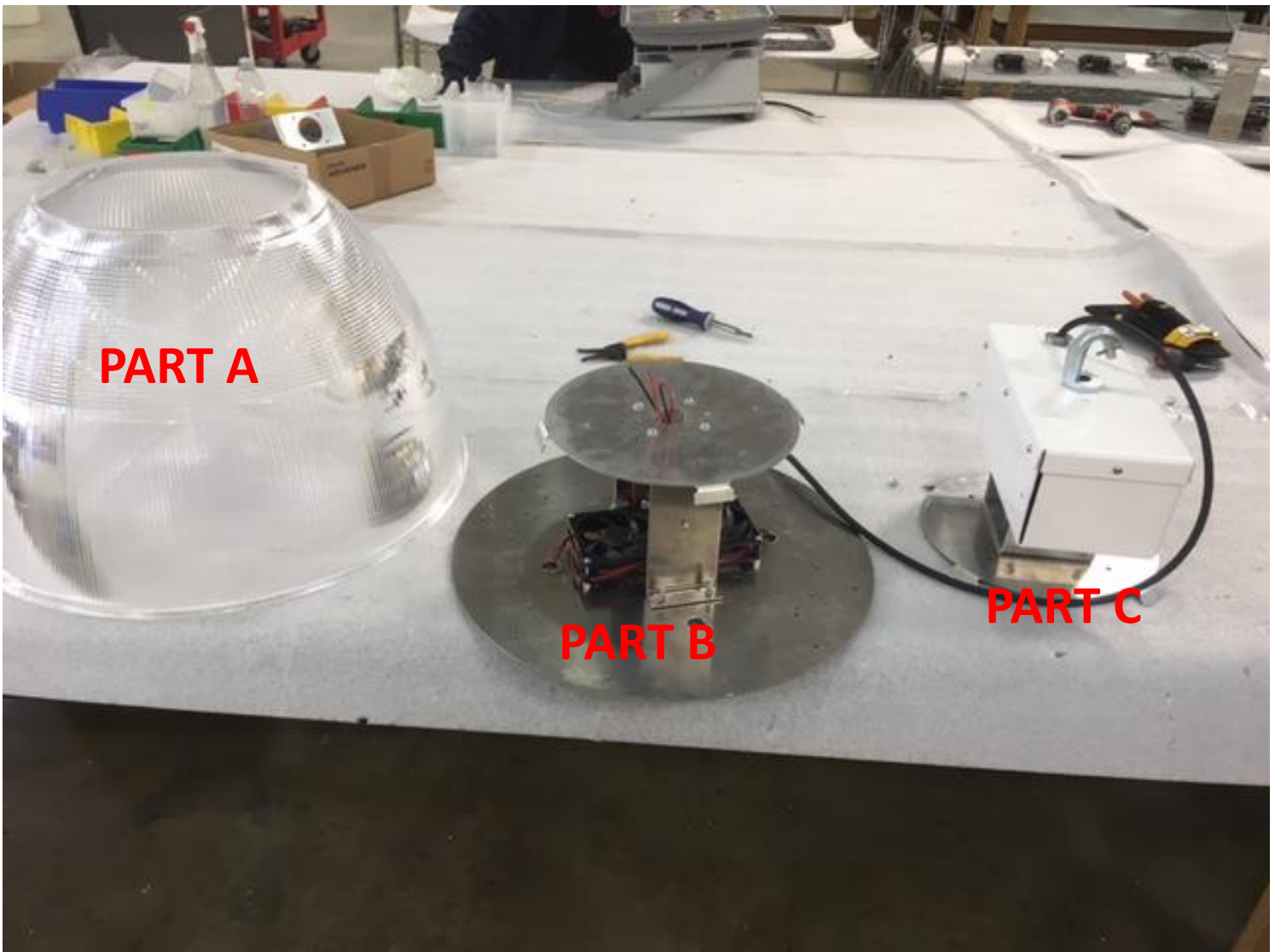
WIRING YOUR FIXTURE!

- STEP 1: Connect both the black AC fixture wire to the black supply wires (line).
- STEP 2: Connect both the red A C fixture wire to the white supply wires (neutral).
- STEP 3: Connect both the green AC fixture wire to the green supply wire (ground).



Installation Steps

STEP 1: Picture 1 shows all the Parts that the Customer is going to receive



Picture 1

Installation Steps

STEP 2: Put the Part B through the Dome as shown in Picture 2.



Picture 2

Installation Instructions

STEP3: Put the 8 x 32 Screw through the Collar along with star washer as shown in Picture 3A and 3B. Also use Plastic Retainers to hold the screw in place.



Picture 3A



Picture 3B

Installation Steps

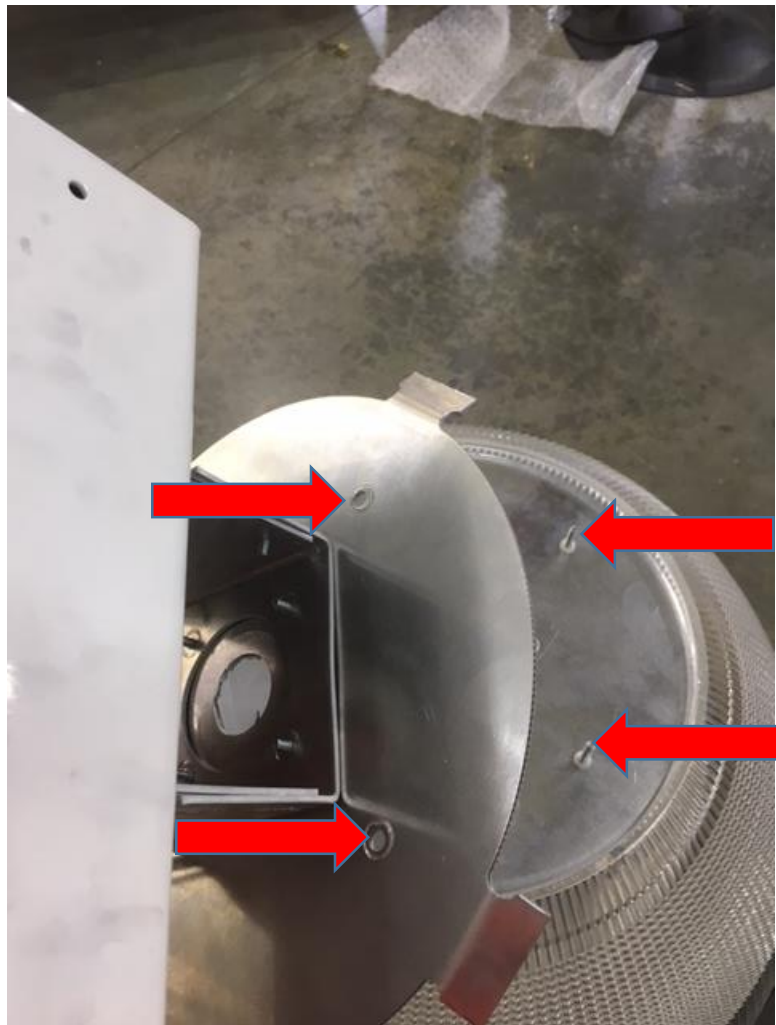
STEP4: Now pass the CLU wires through the center hole as shown in picture 4



Picture 4

Installation Steps

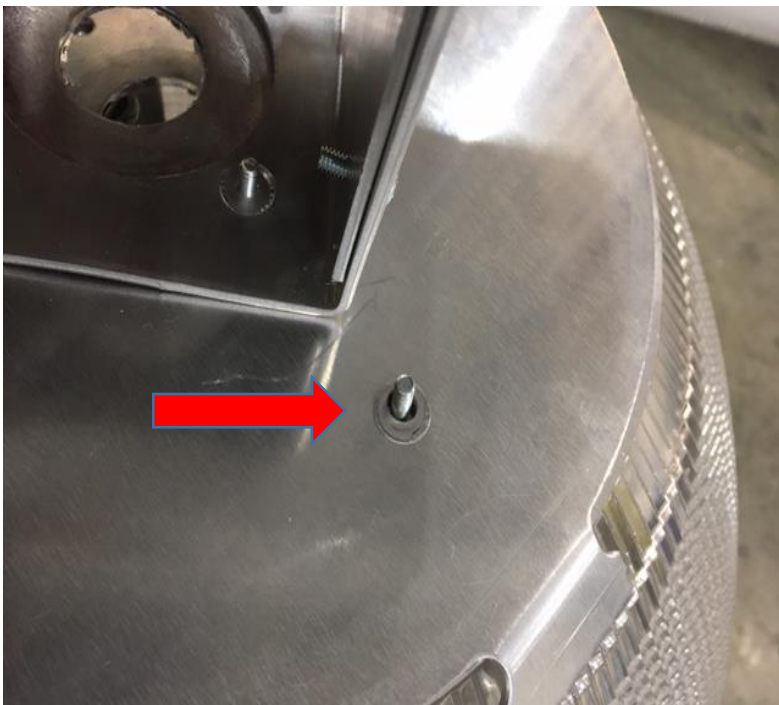
STEP5: Now put the Part C on the Dome in such a way that all the 4 screws go through the 4 holes as shown in Picture 5



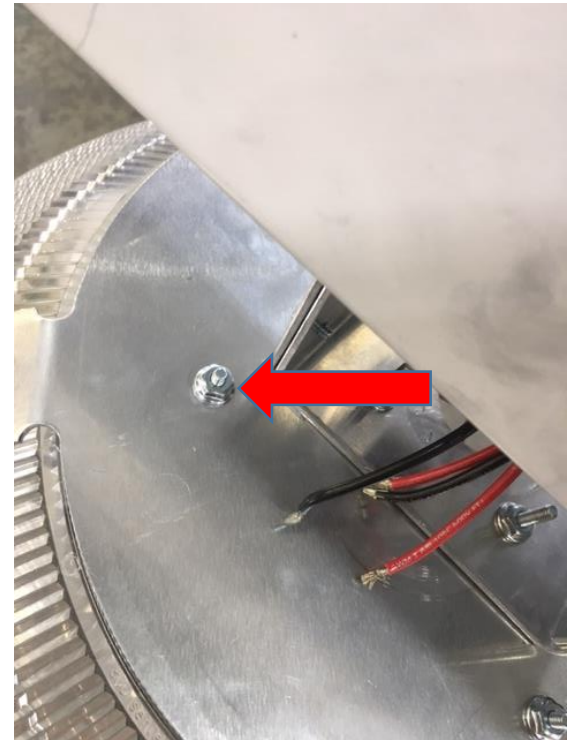
Picture 5

Installation Steps

STEP6: Now fasten a Flange nut on each Screw to Secure the whole assembly together as shown in Picture 6A and 6B



Picture 6A



Picture 6B

Installation Steps

STEP6: Now connect all the Corresponding Red Wires from CLU to the RED wire of the Driver and Black wire from the CLU to the Driver as it was when the customer received it as shown in Picture 7



Picture 7

TROUBLESHOOTING TIPS

STEP 1: Verify proper line voltage is present and wired to the correct input voltage lead.

STEP 2: Verify fixture wiring.

STEP 3: Verify fixture is grounded.